

LSM100A User Manual

Rev 1.1

SEONG JI

Nov. 12, 2021

Contents

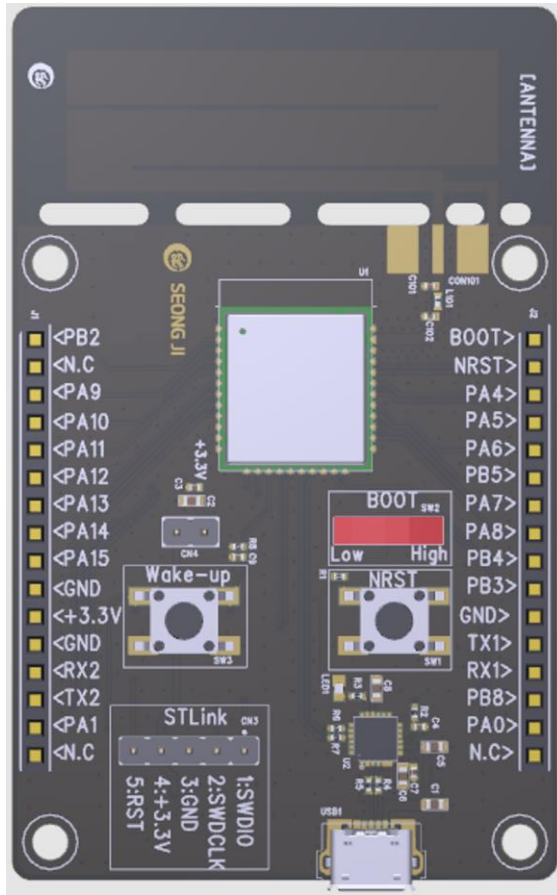
HARD WARE	3
EVALUATION KIT COMPONENT	3
EVB LSM100A BOARD	4
SCHEMATIC	5
CONNECTOR PIN DESCRIPTION	7
ANTENNA DIMENSION	8
RETURN LOSS & VSWR	9
2D RADIATION PATTERN	10
3D EFFICIENCY	11
EVB RADIATION → CONDUCTION CHANGE	12
TEST PROGRAM	13
EVALUATION BOARD CONNECTION	13
PROGRAM EXECUTION	13
TEST PROGRAM DESCRIPTION	14
AT COMMAND COMPLETE SET	19
LoRA COMMAND	19
SIGFOX COMMAND	24

Histroy

Date	Contents	Version	
2021-11-11	Create	V1.0	
2021-11-12	Insertion Hardware Description	V1.1	

Hard Ware

Evaluation Kit Component



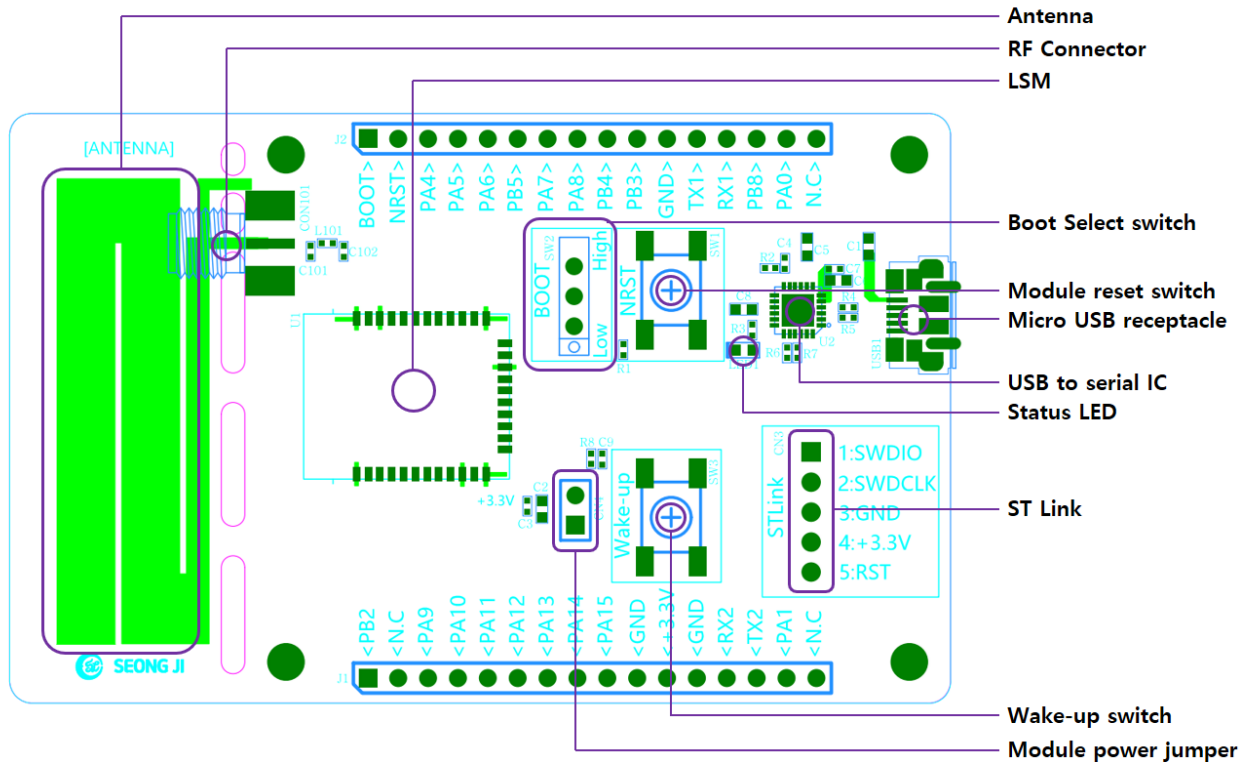
EVB LSM

[Fig. Evaluation Kit Component]

LSM100A Evaluation Kit Component

- 1) EVB LSM: 1EA
- 2) SMA Connector(ST type): 1EA

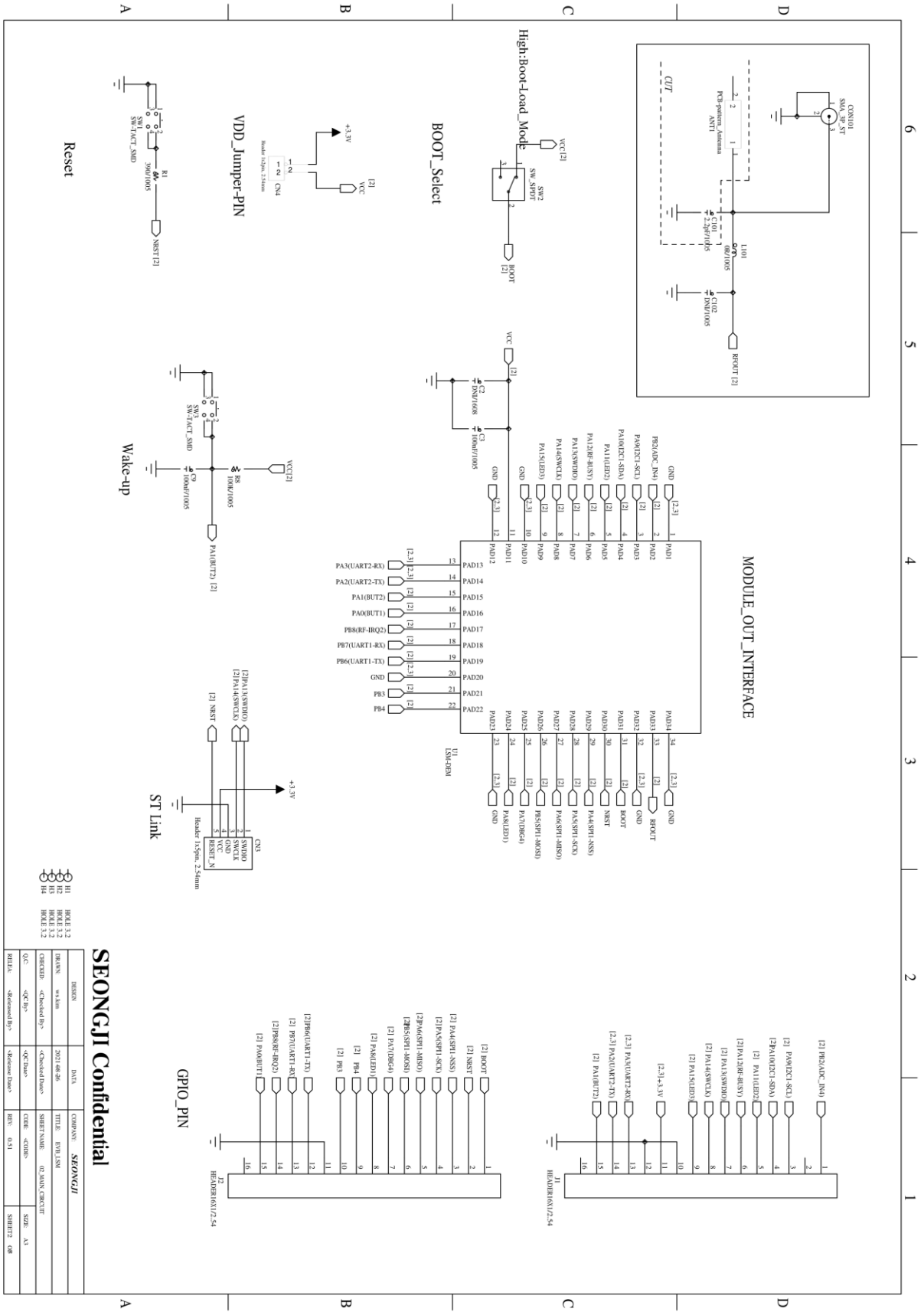
EVB LSM100A Board



[Fig. EVM LSM]

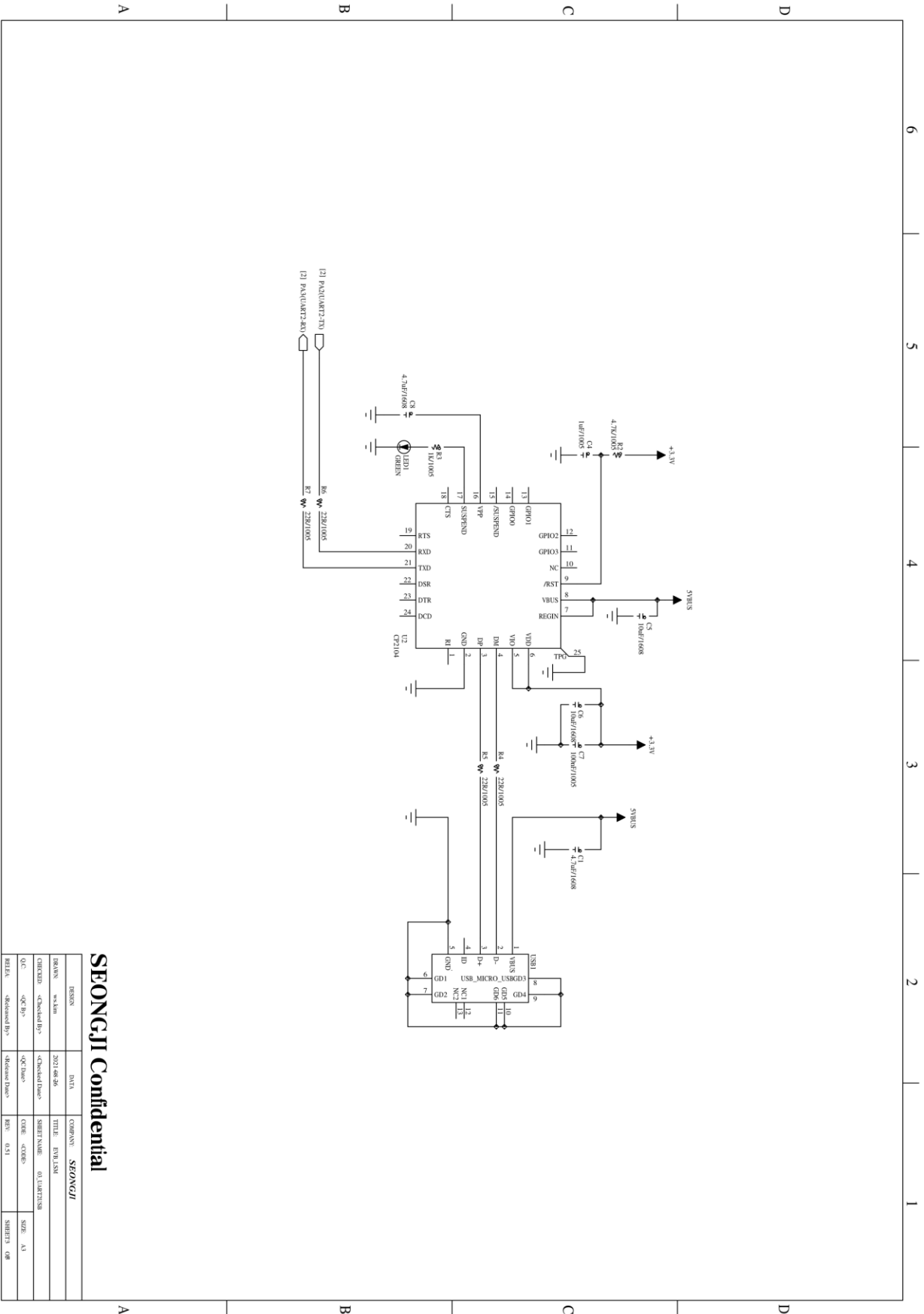
- **RF Connector:** RF connector for Antenna
- **LSM:** LoRa - Sigfox module
- **Boot Select switch:** Boot mode Low/High switch (↓ : Low, ↑ : High)
- **Module reset switch:** EVB LSM H/W reset switch
- **Micro USB receptacle:** Micro USB connector
 - ① Power supply
 - ② Virtual UART interface
- **USB to serial IC:** FT2232HL/ FTDI
- **Status LED:** Debug & Module status LED
- **ST Link:** ST Link connector
- **Wake-up switch:** wake-up switch
- **Module power Jumper:** EVB LSM power supply jumper PIN
- **Module external power PIN:** EVB LSM external power supply PIN (+3.3V supply)

Schematic



SEONGJI Confidential

REVISION	DATE	COMPANY	TITLE	REV. LIST
01	2021.08.26	SEONGJI	LSM100A	01
02				02
03				03
04				04



SEONGJI Confidential

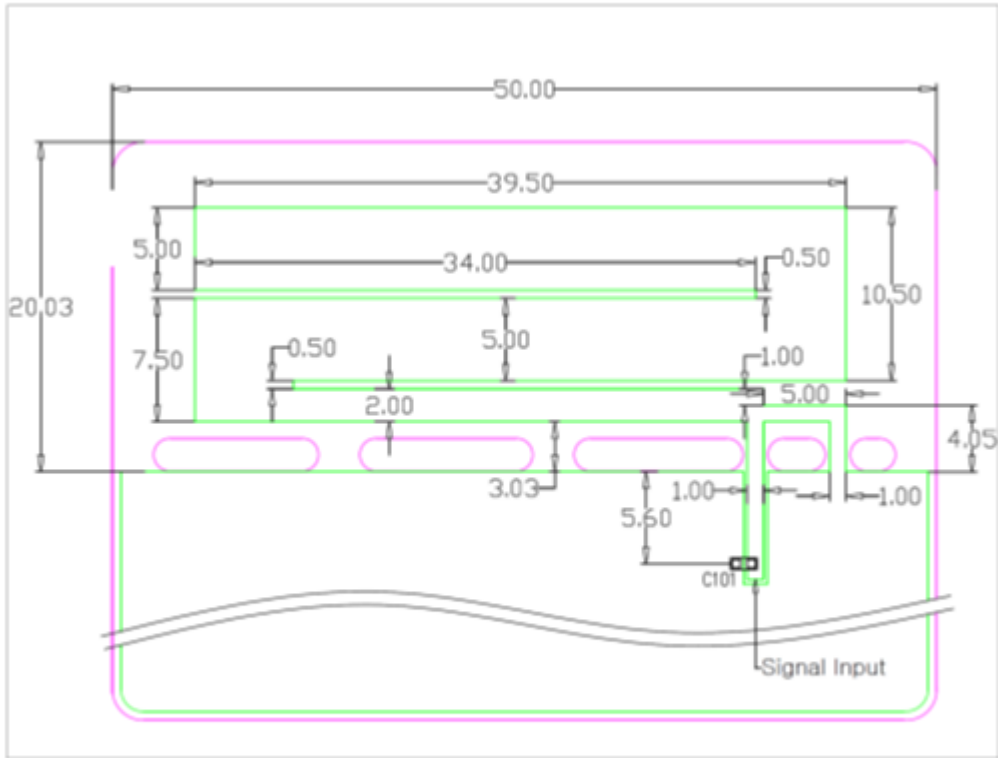
REVISION	DATE	COMPONENT	SEONGJI
BRANK	2021.08.26	TITLE	EVALUATION
CHANGED	<checked by>	SHEET NAME	01.LIBRARY
QC	<checked by>	CODE	COMP
REVIEW	<checked by>	REV	0.01
		SHEET NO	

Connector PIN Description

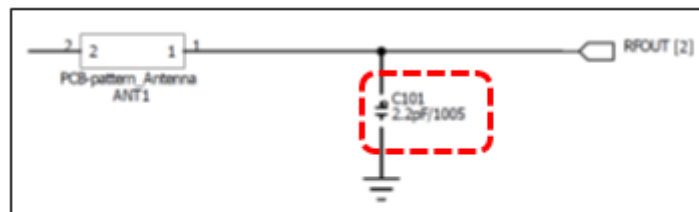
Connector	Pin No.	Pin name	Module Pin No.	Function
J1	1	PB2	2	AC/DC In
	2	-	-	-
	3	PA9	3	Inter-Integrated Circuit Serial Clock (SCL)
	4	PA10	4	Inter-Integrated Circuit Serial Data (SDA)
	5	PA11	5	General purpose IO
	6	PA12	6	General purpose IO
	7	PA13	7	Serial Wire Debug Data (FW Download)
	8	PA14	8	Serial Wire Debug Clock (FW Download)
	9	PA15	9	General purpose IO
	10	GND	-	Ground
	11	VDD	11	Power Supply(+1.8V ~ +3.6V)
	12	GND	12	Ground
	13	PA3	13	UART2 Receive Data
	14	PA2	14	UART2 Transmit Data
	15	PA1	15	Wake-up, General purpose IO
	16	-	-	-

Connector	Pin No.	Pin name	Module Pin No.	Function
J2	1	BOOT	31	IC Boot0
	2	NRST	30	IC Reset
	3	PA4	29	Selectable SPI1 functionality (NSS)
	4	PA5	28	Selectable SPI1 functionality (SCK)
	5	PA6	27	Selectable SPI1 functionality (MISO)
	6	PB5	26	Selectable SPI1 functionality (MOSI)
	7	PA7	25	General purpose IO
	8	PA8	24	General purpose IO
	9	PB4	22	General purpose IO
	10	PB3	21	General purpose IO
	11	GND	20	Ground
	12	PB6	19	UART1 Transmit Data
	13	PB7	18	UART1 Receive Data
	14	PB8	17	General purpose IO
	15	PA0	16	General purpose IO
	16	-	-	-

Antenna Dimension

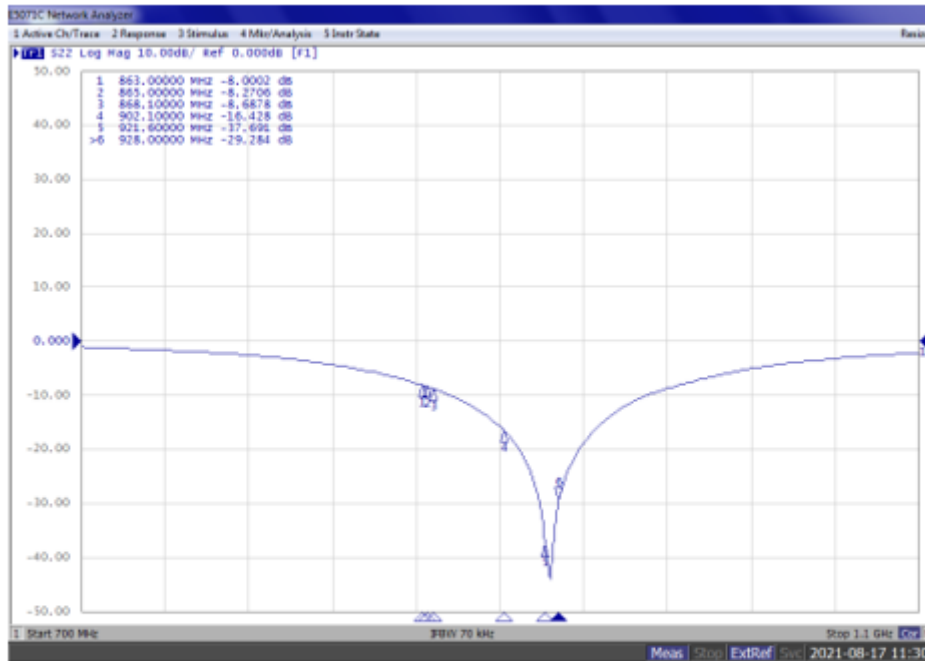


[Antenna Pattern]

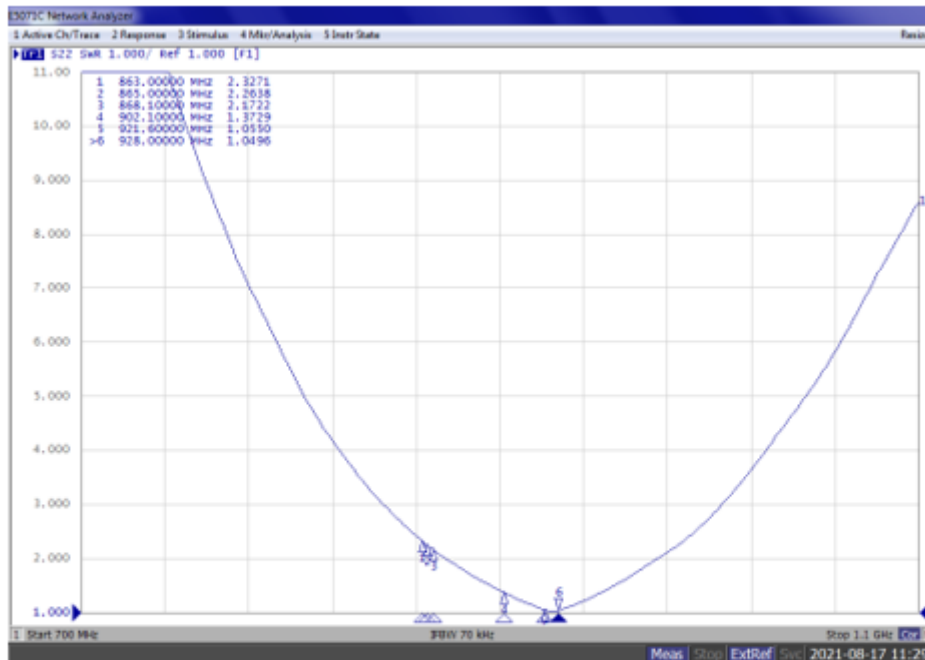


[Matching]

Return loss & VSWR

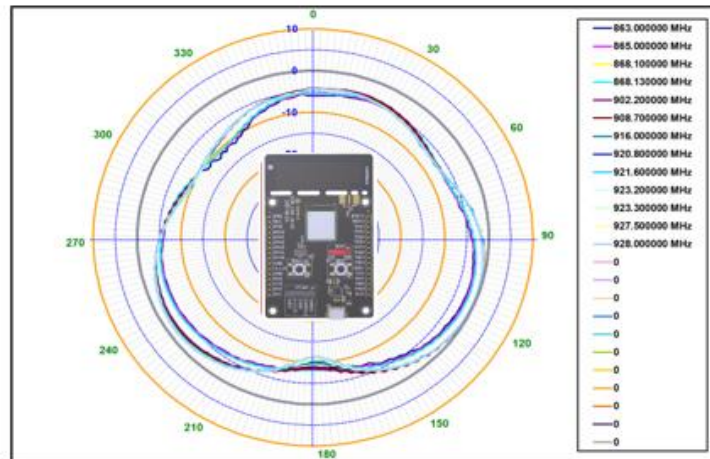


[Return Loss]

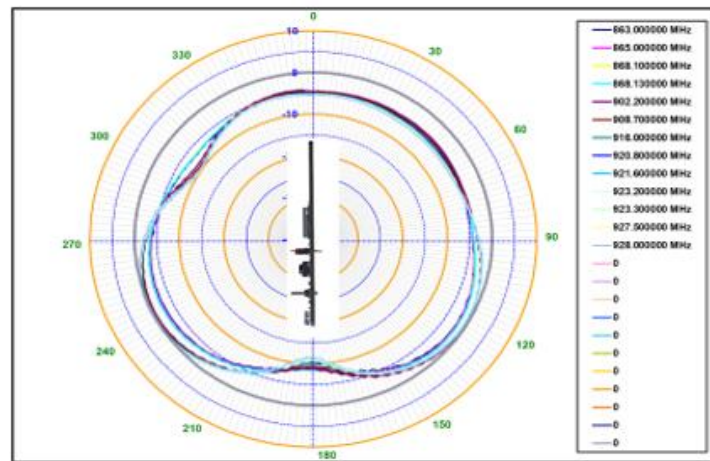


[VSWR]

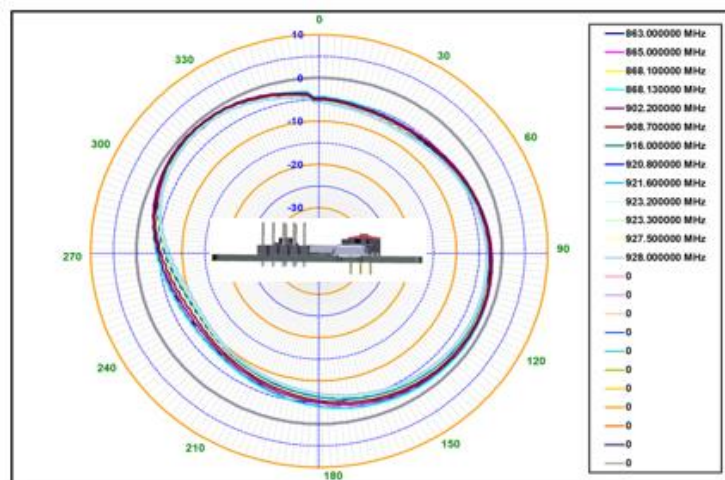
2D Radiation Pattern



[X-Y]



[Y-Z]

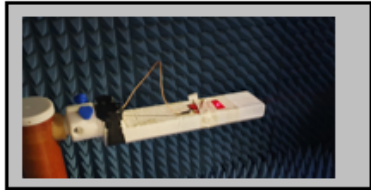


[X-Z]

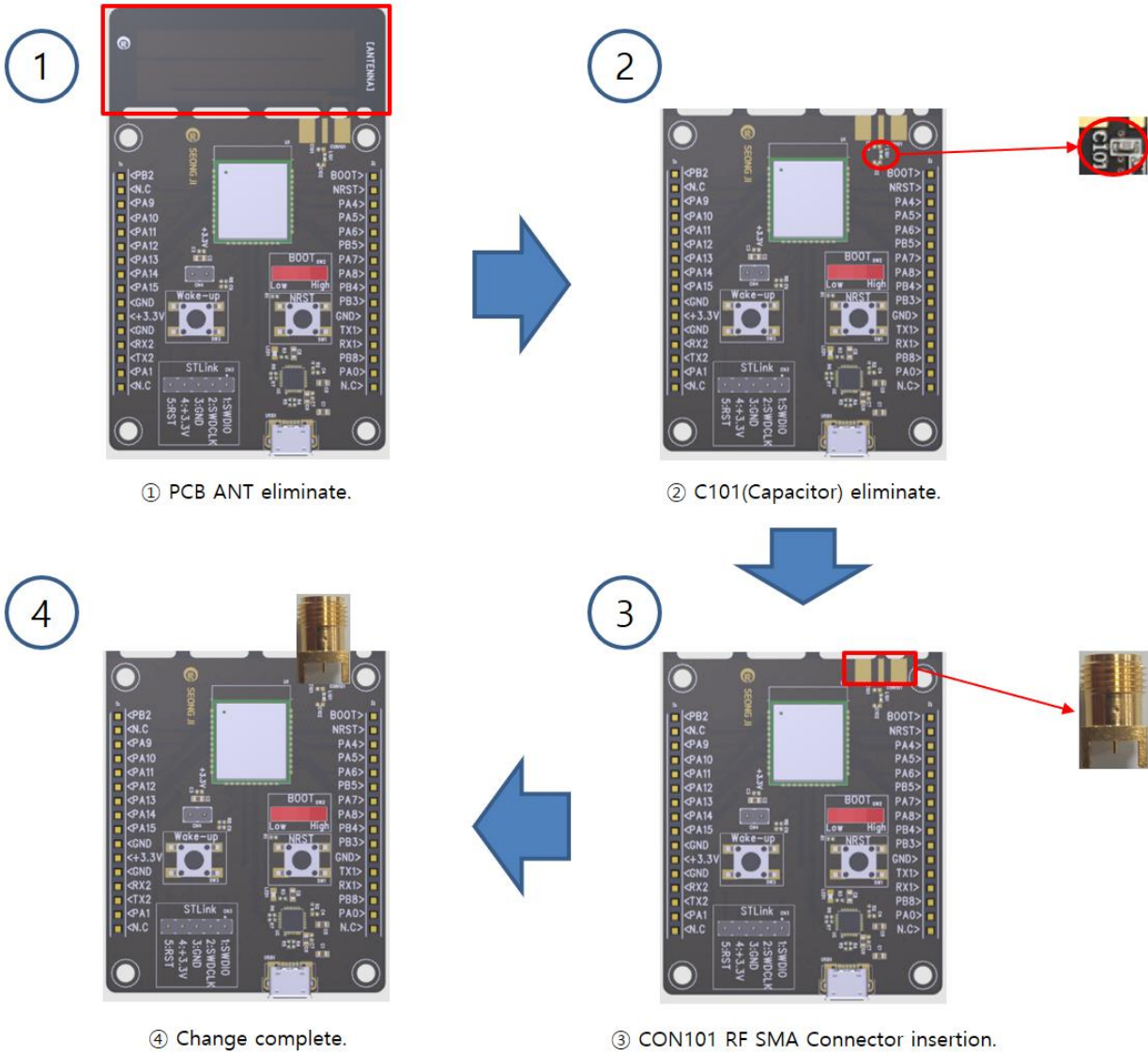
3D Efficiency

Antenna Pattern & Gain Report									
Manufacturer		Company Name							
Model Name		Filename							
Tester Name		Airlink							
Test Date		2021-08-18 오후 4:55:34							
IF BW		100 Hz							
Port Power		0.00 dBm							
Meas Step		15`							

Frequency	Efficiency	Average Gain			Max Gain			Max Position	Directivity
		Ver	Hor	Total	Ver	Hor	Total		
863.000000 MHz	45.0 %	-8.6 dBi	-5.0 dBi	-3.5 dBi	-3.5 dBi	-0.8 dBi	1.0 dBi	Theta105/Pie75	4.49 dB
865.000000 MHz	46.2 %	-8.5 dBi	-4.9 dBi	-3.3 dBi	-3.4 dBi	-0.6 dBi	1.2 dBi	Theta105/Pie75	4.51 dB
868.100000 MHz	48.1 %	-8.3 dBi	-4.8 dBi	-3.2 dBi	-3.2 dBi	-0.5 dBi	1.3 dBi	Theta105/Pie75	4.49 dB
868.130000 MHz	48.1 %	-8.2 dBi	-4.8 dBi	-3.2 dBi	-3.3 dBi	-0.5 dBi	1.3 dBi	Theta105/Pie75	4.49 dB
902.200000 MHz	51.5 %	-7.3 dBi	-4.8 dBi	-2.9 dBi	-2.2 dBi	-0.2 dBi	1.9 dBi	Theta105/Pie75	4.80 dB
908.700000 MHz	49.8 %	-7.3 dBi	-5.0 dBi	-3.0 dBi	-2.1 dBi	-0.3 dBi	1.9 dBi	Theta105/Pie75	4.89 dB
916.000000 MHz	45.3 %	-7.6 dBi	-5.5 dBi	-3.4 dBi	-2.3 dBi	-0.8 dBi	1.5 dBi	Theta105/Pie75	4.96 dB
920.800000 MHz	45.5 %	-7.6 dBi	-5.5 dBi	-3.4 dBi	-2.1 dBi	-0.7 dBi	1.6 dBi	Theta105/Pie75	5.05 dB
921.600000 MHz	45.9 %	-7.6 dBi	-5.5 dBi	-3.4 dBi	-2.1 dBi	-0.7 dBi	1.7 dBi	Theta105/Pie75	5.04 dB
923.200000 MHz	45.9 %	-7.6 dBi	-5.4 dBi	-3.4 dBi	-2.0 dBi	-0.7 dBi	1.7 dBi	Theta105/Pie75	5.05 dB
923.300000 MHz	45.9 %	-7.6 dBi	-5.4 dBi	-3.4 dBi	-2.0 dBi	-0.7 dBi	1.7 dBi	Theta105/Pie75	5.05 dB
927.500000 MHz	45.3 %	-7.7 dBi	-5.5 dBi	-3.4 dBi	-2.0 dBi	-0.8 dBi	1.6 dBi	Theta105/Pie75	5.04 dB
928.000000 MHz	45.1 %	-7.7 dBi	-5.5 dBi	-3.5 dBi	-2.0 dBi	-0.8 dBi	1.6 dBi	Theta105/Pie75	5.03 dB



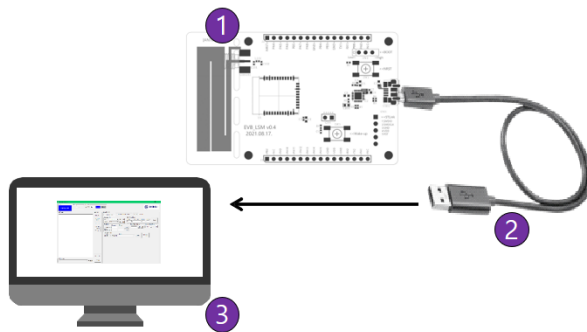
EVB Radiation → Conduction Change



Test Program

Evaluation board Connection

1. EVBLSM100A connect to Window PC by USB cable.

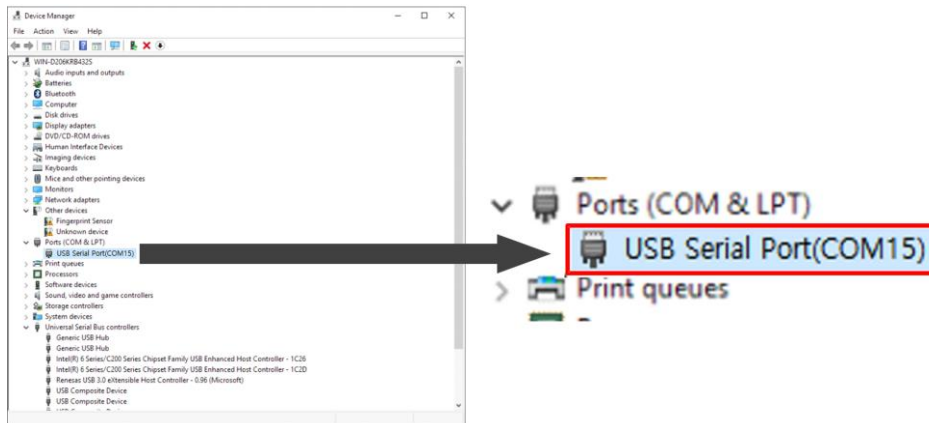


- (1) EVBLSM100A
- (2) Micro USB cable
- (3) Windows PC

[Fig. EVBLSM100A connection]

Program execution

1. EVBLSM100A connected serial-poet in Windows PC, and then check the COM-port number in device manager.
- USB Serial Port(Com□□)



[Fig. EVBLSM100A serial port]

2. Run serial communication program "LSM100_CMD_vXX.exe"
3. Write serial port Number in 'DUTCOM' BOX, and then 'connect' click.

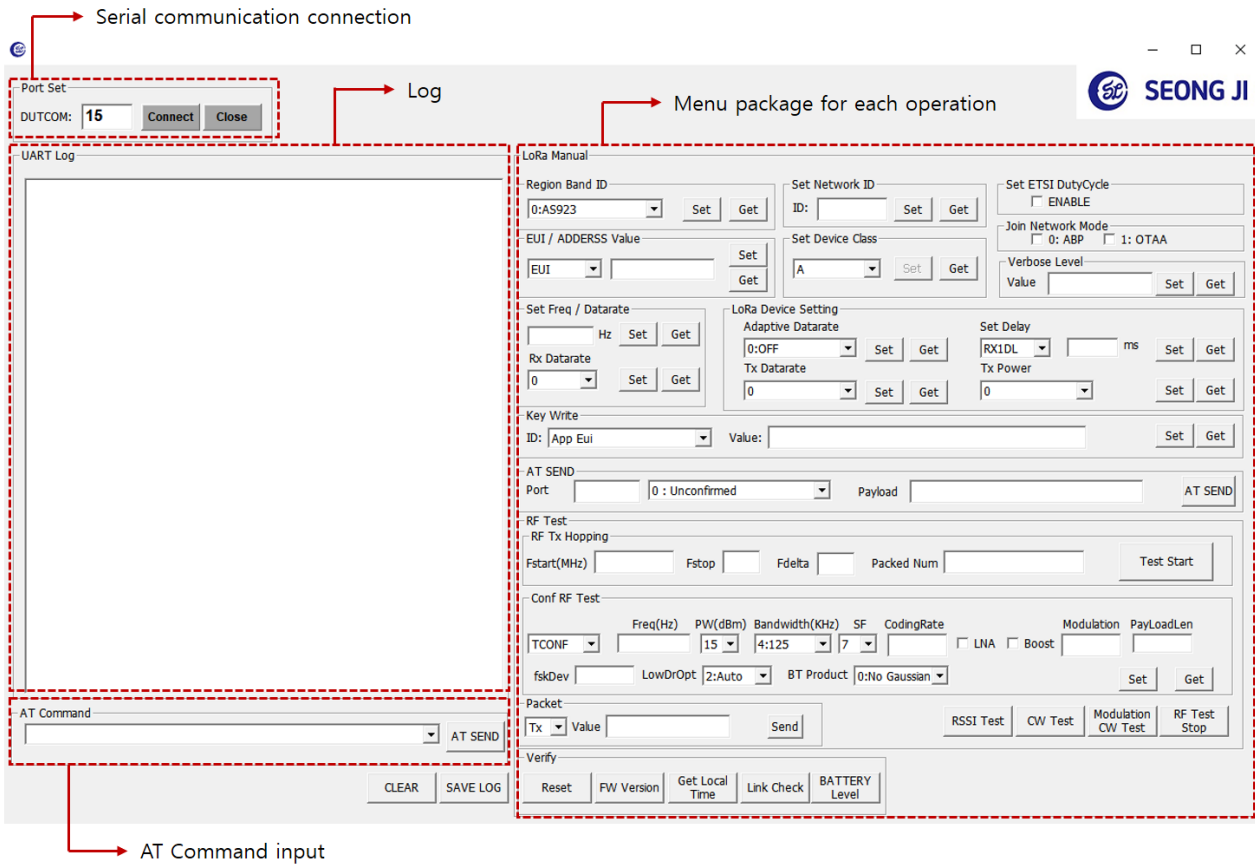


Serial port number

[Fig. EVBLSM100A serial port number]

Test program Description

1. Lora command GUI

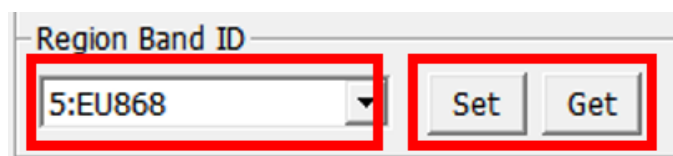


[Fig. Screen of execute Test program]

- 1) Write command on AT Command edit box located on left bottom and then click Send button to execute command. Configuration value list is defined on chapter "AT command complete set"
- 2) Instead of the item 2), can click button to execute on each AT command menu package on the right.

Example)

Command : AT+BAND=5 (CR) AT+BAND=? (CR)

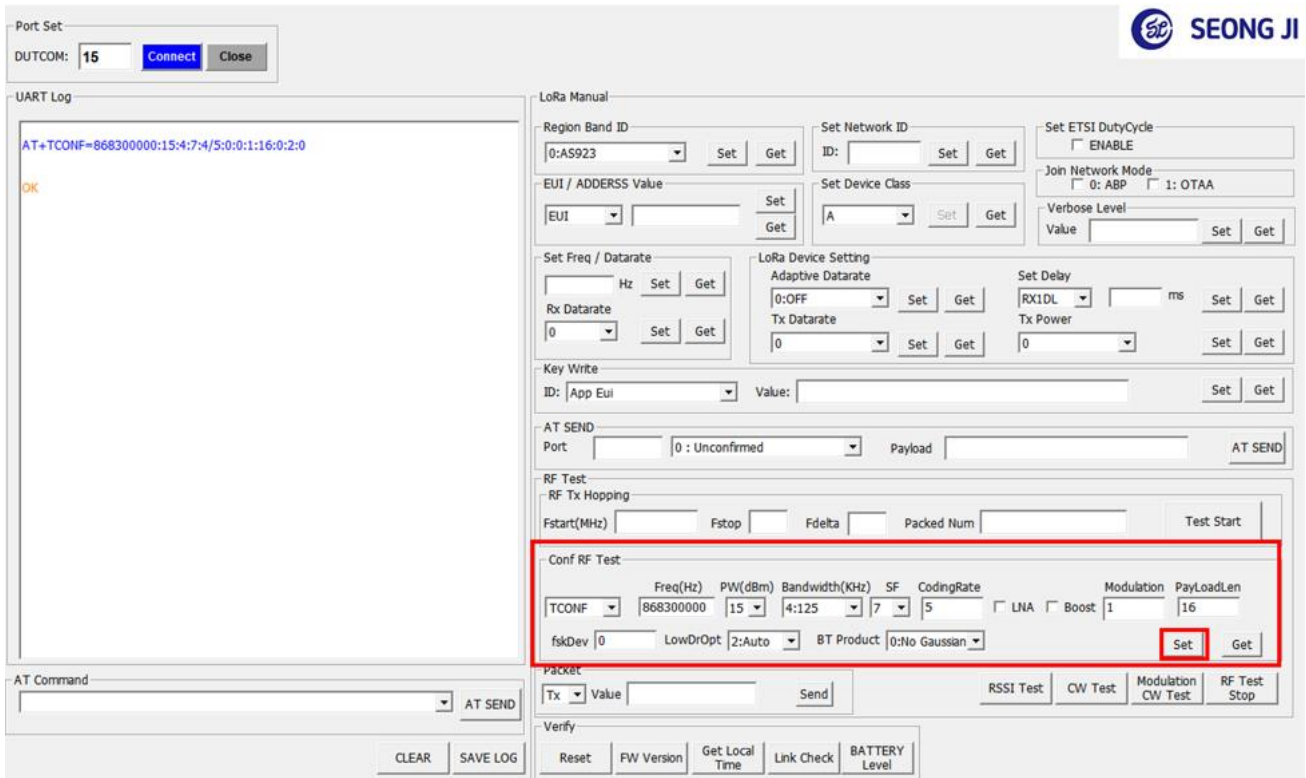


[Fig. Region Band ID Set Command]

Lora RF Test Description

1) Configure RF test
General Setting

* **Conf RF Test Setting**(Required to set every device reset)



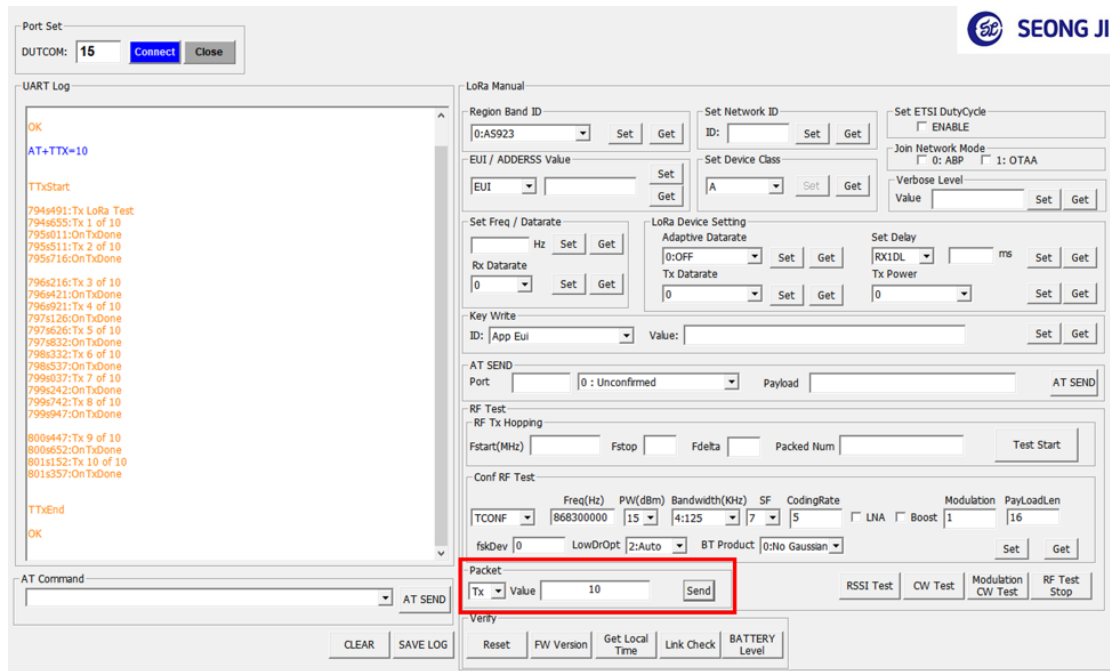
- As in the picture above, enter parameters without spaces and Set

AT+TCONF=<Frequency>:<Power>:<LoRa Bandwidth>:<Lora SF>:<CodingRate>:<Lna>:<PA Boost>:
<Modulation>:<PayloadLen>:<FskDeviation>:<LowDrOpt >:<BTproduct:> <CR>

EX) AT+TCONF=868300000:10:4:5:4/5:0:0:1:16:0:0

2) Tx Test

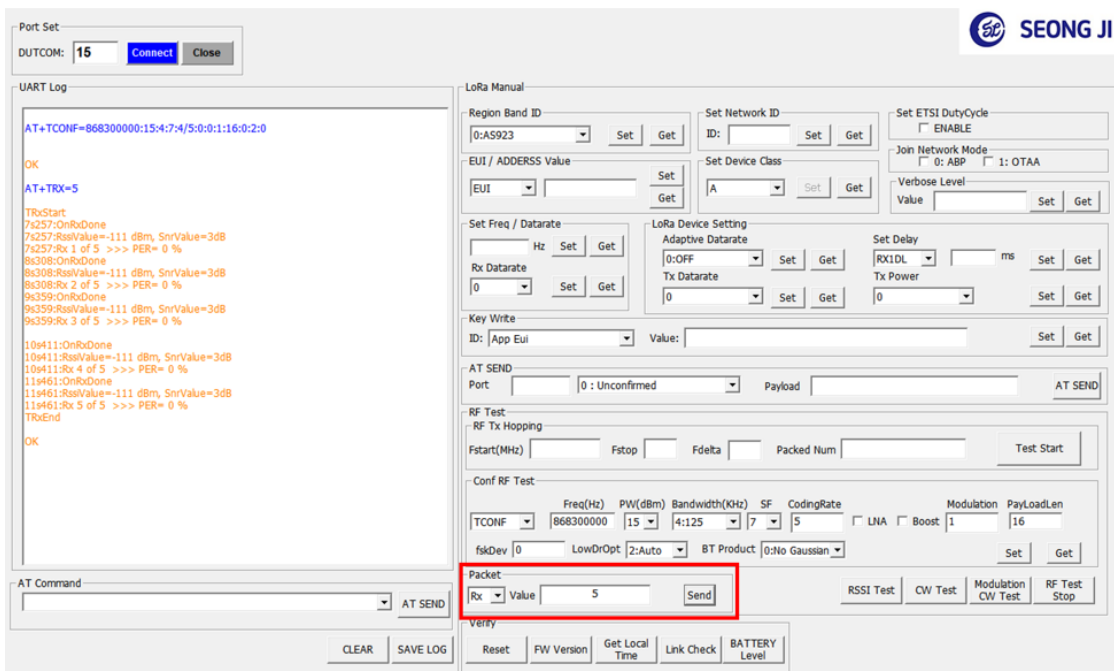
After selecting Tx in the Packet part, set the number of times to repeat Value and Send.



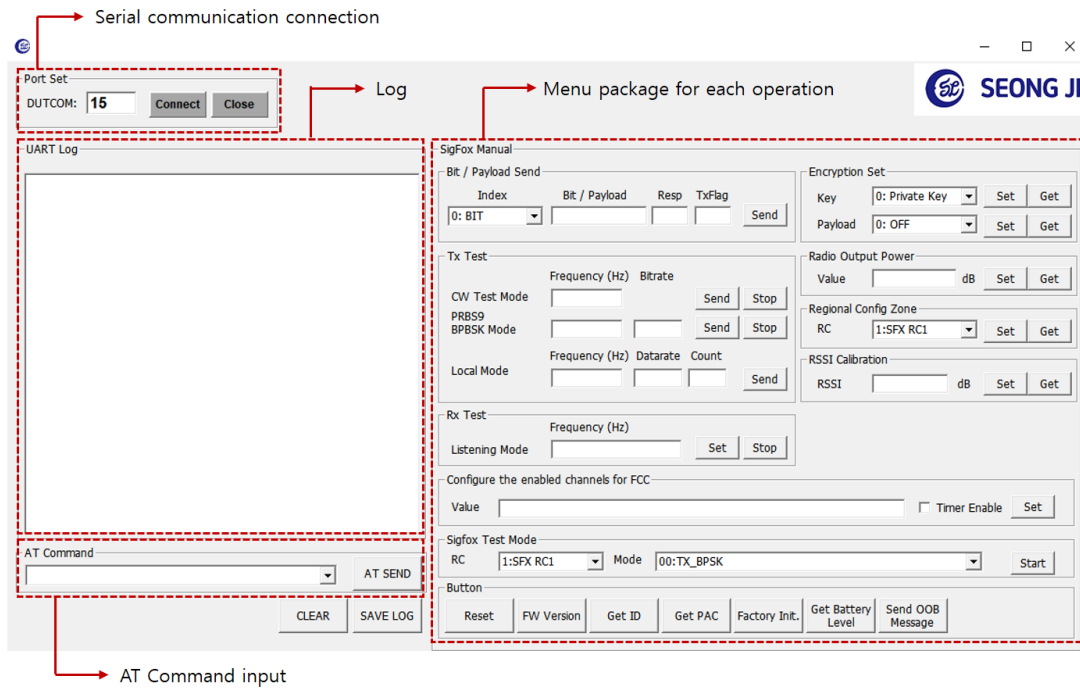
3) Rx Test

After selecting Rx in the Packet part, set the number of times to repeat Value and Send.

- a. if received success display "OnRxDone"
- b. if received fail display "OnRxTimeout"



2. Sigfox command GUI

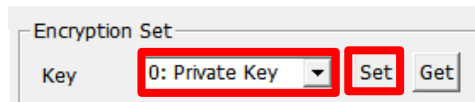


[Fig. Screen of execute Test program]

- 1) Write command on AT Command edit box located on left bottom and then click Send button to execute command. Configuration value list is defined on chapter "AT command complete set"
- 2) Instead of the item 2), can click button to execute on each AT command menu package on the right.

Example)

Command : AT+ATS410=0 (CR) (0: private key 1: public key)



[Fig. Encryption Set Command]

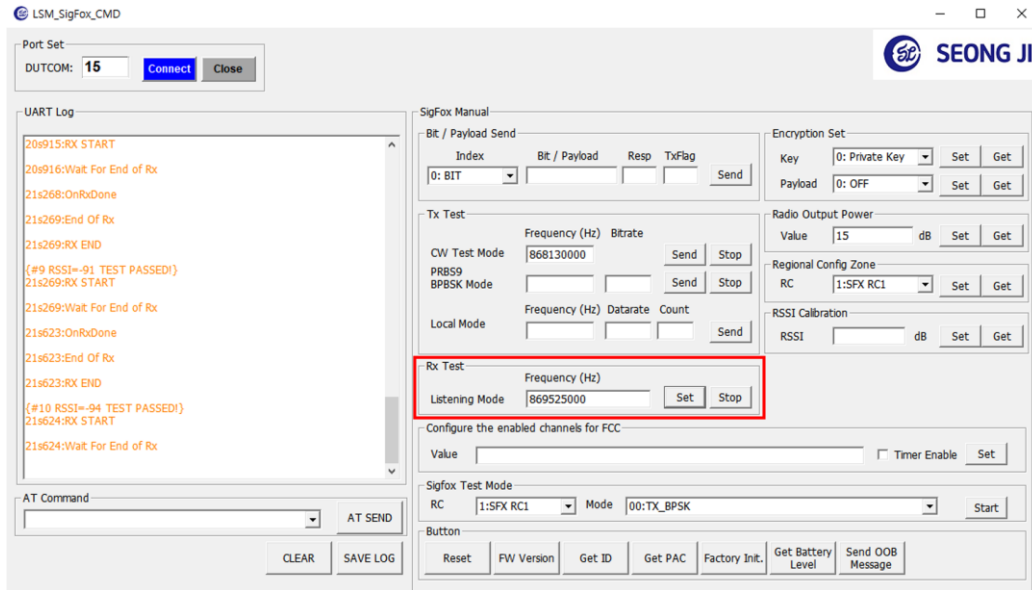
Sigfox RF Test Description

- 1) Input AT Command command to LSM100A used as RX

EX) AT+RL=869525000

- 2) Test Result

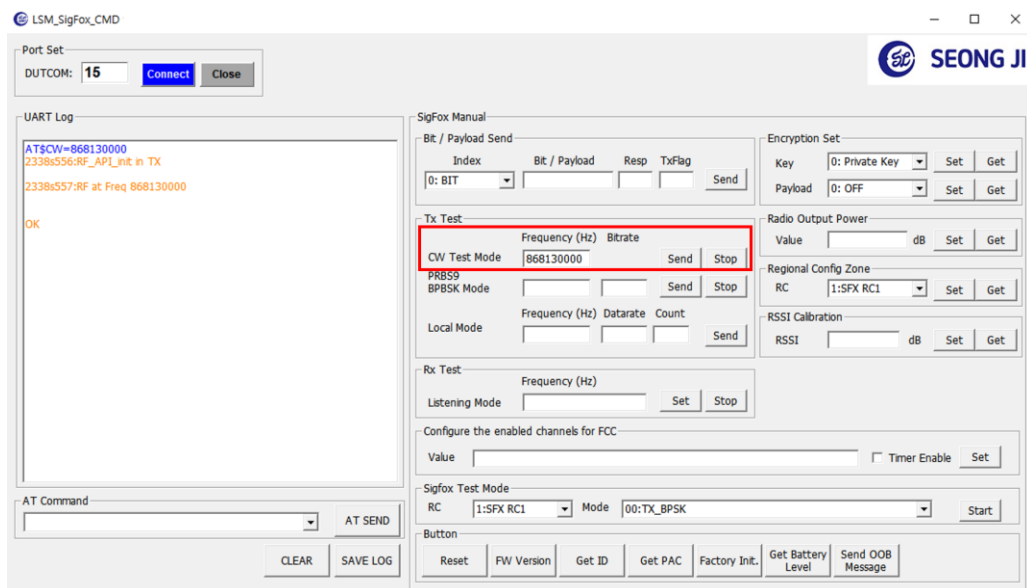
- a. if received success display "TEST PASSED"
- b. if received fail display "Wait For End of Rx"



- 3) Input AT Command command to LSM100A used as TX

EX) AT+CW=868130000

➔ Transmit frequency to Continuous wave



AT command complete set

A typical serial terminal emulator can also be used to control the EVK instead of the proposed test SW. In that case the following parameters should be used:

- Speed : 9600 bauds
- Data bits: 8
- Stop bits: 1
- Parity: None

The following table gather all AT command available:

LoRa Command

Command	Name	Description
AT?	Help on all <CMD>	Help on All Commands. Ex) AT? (CR)
ATZ	Reset	Trig a MCU reset. Ex) ATZ (CR)
AT+BAT=?	Battery level	Get the battery level (in mV). Ex) AT+BAT=? (CR)
AT+VL=level AT+VL=?	Verbose level	Set or Get the verbose level. <level>: [0: off ~ 3: High] Ex) AT+VL=3 (CR)
AT+MODE=mode AT+MODE=?	Mode Change	LoRa & Sigfox Mode Change. After a MCU reset. <mode>: [0: SigFox, 1: LoRa] Ex) AT+MODE=1 (CR)
AT+VER=?	Firmware and library versions	Get the version of firmware and libraries. Ex) AT+VER=? (CR)
AT+LTIME=?	Local time in UTC format	Get the local time in UTC format. Ex) AT+LTIME=? (CR)
AT+LINKC?	Link Check	Piggyback a Link Check Request to the next uplink. Ex) AT+LINKC? (CR)

AT+APPEUI=eui AT+APPEUI=?	Application EUI	Set or Get the Application EUI. Ex) AT+APPEUI=00:00:00:00:00:00:07 (CR)
AT+NWKKEY=key AT+NWKKEY=?	Network Key	Set or Get the Network Key. Ex) AT+NWKKEY=00:11:22:33:44:55:66:77:88:99:AA:BB:CC:DD:EE:FF (CR)
AT+APPKEY=key AT+APPKEY=?	Application Key	Set or Get the Application Key. Ex) AT+APPKEY=00:11:22:33:44:55:66:77:88:99:AA:BB:CC:DD:EE:FF (CR)
AT+NWKSKEY=key AT+NWKSKEY=?	Network Session Key	Set or Get the Network Session Key. Ex) AT+NWKSKEY=00:11:22:33:44:55:66:77:88:99:AA:BB:CC:DD:EE:FF (CR)
AT+APPSKEY=key AT+APPSKEY=?	Application Session Key	Set or Get the Application Session Key. Ex) AT+APPSKEY=00:11:22:33:44:55:66:77:88:99:AA:BB:CC:DD:EE:FF (CR)
AT+DADDR=address AT+DADDR=?	Device address	Set or Get the Device address. Ex) AT+DADDR=00:11:22:33 (CR)
AT+DEUI=?	Device EUI	Get the Device EUI. Ex) AT+DEUI=? (CR)
AT+NWKID=id AT+NWKID=?	Network ID	Set or Get the Network ID. <id>: [0 ~ 127]. Ex) AT+NWKID=100 (CR)
AT+JOIN=mode AT+JOIN=?	Join network with Mode	Join network with Mode. <mode> [0: ABP, 1: OTAA] Ex) AT+JOIN=1 (CR)
AT+SEND=port:ack:data	Send binary data	Send binary data with the application <Port> [1 ~ 199] <Ack> [0: unconfirmed, 1: confirmed] Ex) AT+SEND=1:1:123456789012345678901234567890123456789012345678901234567890123456 (CR)

AT+ADR=mode AT+ADR=?	Adaptive DataRate	Set or Get the Adaptive DataRate setting. <mode>: [0: Off, 1: On] Ex) AT+ADR=0 (CR)
AT+DR=datarate AT+DR=?	Tx DataRate	Set or Get the Tx DataRate. Activation when ADR off Only <datarate>: [0 ~ 7] [EU868] 0: LoRa - SF12 / 125 kHz, bit rate - 250 bit/s 1: LoRa - SF11 / 125 kHz, bit rate - 440 bit/s 2: LoRa - SF10 / 125 kHz, bit rate - 980 bit/s 3: LoRa - SF9 / 125 kHz, bit rate - 1760 bit/s 4: LoRa - SF8 / 125 kHz, bit rate - 3125 bit/s 5: LoRa - SF7 / 125 kHz, bit rate - 5470 bit/s 6: LoRa - SF7 / 250 kHz, bit rate - 11000 bit/s 7: FSK - 50 kbps, bit rate - 5000 bit/s Ex) AT+DR=0 (CR)
AT+TXP=power AT+TXP=?	Transmit Power	Set or Get the Transmit Power. (valid range according to region) <power>: [0 ~ 15] AS923: [0~7] AU915: [0~14] CN779: [0~5] EU868: [0~7] KR920: [0~7] IN865: [0~10] US915: [0~14] RU864: [0~7] Ex) AT+TXP=0 (CR) (in KR920 0: MAX ERP)
AT+BAND=band AT+BAND=?	Active Region Band ID	Set or Get the Active Region Band ID. [0 ~ 9] <band>: [0: AS923, 1: AU915, 2: CN470, 3: CN779, 4: EU433, 5: EU868, 6: KR920, 7: IN865, 8: US915, 9: RU864] Ex) AT+BAND=0 (CR)
AT+CLASS=class AT+CLASS=?	Device Class	Set or Get the Device Class. <Class>: [A, B, C] Ex) AT+CLASS=? (CR) *B, C To be update.
AT+DCS=mode AT+DCS=?	ETSI DutyCycle	Set or Get the ETSI DutyCycle. <mode>: [0: disable, 1: enable] - Only for testing Ex) AT+DCS=0 (CR) (for KR920, AS923, AU915,..)

AT+RX2FQ=freq AT+RX2FQ=?	Rx2 window Freq	Set or Get the Rx2 window. <freq>: Frequency (in Hz) Ex) AT+RX2FQ=869525000 (CR)
AT+RX2DR=datarate AT+RX2DR=?	Rx2 window DataRate	Set or Get the Rx2 window DataRate. <datarate>: [0 ~ 7] Ex) AT+RX2DR=0 (CR)
AT+RX1DL=delay AT+RX1DL=?	Delay between end of Tx and Rx Window 1	Set or Get the delay between the end of the Tx and the Rx Window 1. <delay>: delay (in ms) Ex) AT+RX1DL=1000 (CR)
AT+RX2DL=delay AT+RX2DL=?	Delay between end of Tx and Rx Window 2	Set or Get the delay between the end of the Tx and the Rx Window 2 in ms. <delay>: delay (in ms) Ex) AT+RX2DL=2000 (CR)
AT+JN1DL=delay AT+JN1DL=?	Join Accept Delay between end of Tx and Join Rx Window 1	Set or Get the Join Accept Delay between the end of the Tx and the Join Rx Window 1 in ms. <delay>: delay (in ms) Ex) AT+JN1DL=5000 (CR)
AT+JN2DL=delay AT+JN2DL=?	Join Accept Delay between end of Tx and Join Rx Window 2	Set or Get the Join Accept Delay between the end of the Tx and the Join Rx Window 2 in ms. <delay>: delay (in ms) Ex) AT+JN2DL=6000 (CR)
AT+TTH=fstart:fstop:fdelt a:packetnb	Test Tx Hopping	Starts RF Tx hopping test from Fstart to Fstop in Hz or MHz, Fdelta in Hz. Class B test. <fstart>: frequency (in Hz or MHz) <fstop>: frequency (in Hz or MHz) <fdelta>: frequency (in Hz) Ex) AT+TTH=867:869:500000:10 (CR)

AT+TCONF=frequency:power:bandwidth:sf:codingrate:lna:paboost:modulation:payloadlen:fskdeviation:lowdropt:btproduct	Configure RF	<p>Configure RF test.</p> <p><Frequency>: [ex: 868300000]Hz <Power>: [-9 ~ 22]dBm Max 15dBm at Low Power <Bandwidth>: Lora [4: 125, 5: 250, 6: 500]kHz, or FSK: [4800Hz : 467000]Hz <SF>: [7 ~ 12] or <FSK>: [600 ~ 300000] <CodingRate>: [4/5, 4/6, 4/7, 4/8] <Lna>: [0: Off, 1: On] <PA Boost>: [0: Off, 1: On] <Modulation>: [0: FSK, 1: LoRa, 2: BPSK] <PayloadLen>: [1 ~ 256] <FskDev>: FSK Only [600 ~ 20000] <LowDrOpt>: Lora Only [0: off, 1: On, 2: Auto] <BTproduct>: [0: no Gaussian Filter Applied, 1: BT=0,3, 2: BT=0,5, 3: BT=0,7, 4: BT=1]</p> <p>Ex) AT+TCONF=922300000:14:4:12:4/5:1:0:1:16:0:2:3 (CR)</p>
AT+TTONE	RF Tx Tone test	<p>Starts RF Tx Tone test (CW Test Mode)</p> <p>Ex)AT+TTONE (CR)</p>
AT+TRSSI	RF Rx RSSI test	<p>Starts RF Rx RSSI test.</p> <p>Ex) AT+TRSSI (CR)</p>
AT+TTX=packetnb	Test RF Tx	<p>Starts RF Tx test: Nb of packets sent.</p> <p>Ex) AT+TTX=16 (CR)</p>
AT+TRX=packetnb	Test RF Rx	<p>Starts RF Rx test: Nb of packets expected.</p> <p>Ex) AT+TRX=16 (CR)</p>
AT+MTX	Test RF Modulation wave	<p>Starts RF Tx test: Modulation Continuous Wave</p> <p>Ex) AT+MTX (CR)</p>
AT+MRX	Test RF Continuous Rx	<p>Starts RF Rx test: Continuous receive</p> <p>* If you want to stop, Enter the 'X'.</p> <p>Ex) AT+MRX (CR)</p>
AT+TOFF	Stop RF test	<p>Stops on-going RF test.</p> <p>Ex) AT+TOFF (CR)</p>

Sigfox Command

Command	Name	Description
AT?	Help on all <CMD>	Help on All Commands Ex) AT? (CR)
ATZ	Reset	Trig a MCU reset. Ex) ATZ (CR)
ATE=mode	Echo mode	Not used except to set echo mode. <mode>: [0: echo ON, 1: echo OFF] Ex) ATE=1 (CR) ATE=? (CR) Get echo mode
AT+BAT=?	Battery level	Get the battery level (in mV). Ex) AT+BAT=? (CR)
AT+VL=level AT+VL=?	Verbose level	Set or Get the verbose level. <level>: [0: off, 1: Low, 2: Meddle, 3: High] Ex) AT+VL=3 (CR) AT+VL=? (CR) Get level
AT+MODE=mode AT+MODE=?	Mode Change	LoRa & Sigfox Mode Change. After a MCU reset. <mode>: [0: SigFox, 1: LoRa] Ex) AT+MODE=1 (CR) AT+MODE=? (CR) Get mode
AT+VER=?	Firmware and library versions	Get the version of firmware and libraries. Ex) AT+VER=? (CR)
AT\$RFS	Factory settings	Restores the factory setting. Ex) AT\$RFS (CR)
AT\$ID	Device ID	Get the 32-bit device ID. Ex) AT\$ID (CR)
AT\$PAC	Device PAC	Get the 8-byte device PAC. Ex) AT\$PAC (CR)

<p>AT\$SB=bit_value{,opt_responsewaited}{,opt_txflag}</p>	<p>Bit status</p>	<p>Send a bit to the Sigfox network.</p> <p><bit_value>: [0 or 1]</p> <p><opt_responsewaited> 0: no response waited (default)</p> <p><opt_responsewaited> 1: response waited</p> <p><opt_txflag> 0: one Tx frame sent</p> <p><opt_txflag> 1: three Tx frame sent (default)</p> <p>Ex) AT\$SB=0,1,1 (CR)</p> <p>AT\$SB=1 (CR) sends bit 1 with no response waited.</p> <p>AT\$SB=0,1 (CR) sends bit 0 with a response waited.</p> <p>AT\$SB=0,1,1 (CR) sends bit 0 with a response waited and with three Tx frames sent.</p>
<p>AT\$SF=payload{,opt_responsewaited}{,opt_txflag}</p>	<p>ASCII payload in bytes</p>	<p>Send a frame to the Sigfox network.</p> <p><payload>: [12 bytes maximum in ASCII format (24 ASCII characters max)]</p> <p><opt_responsewaited>: [0: no response waited (default)]</p> <p><opt_responsewaited>: [1: response waited]</p> <p><opt_txflag>: [0: one Tx frame sent]</p> <p><opt_txflag>: [1: three Tx frames sent (default)]</p> <p>Ex) AT\$SF=313245,1,1 (CR)</p> <p>AT\$SF=313245 (CR) sends 0x31 0x32 0x45 payload with no response waited.</p> <p>AT\$SF=313245,1 (CR) sends 0x31 0x32 0x45 payload with a response waited.</p> <p>AT\$SF=313245,1,1 (CR) sends 0x31 0x32 0x45 payload with a response waited and with three Tx frames sent.</p>

AT\$SH=payload_length, payload{,opt_responsewait ed}{,opt_txflag}	Hexadecimal payload in bytes	Send a Hex frame to the Sigfox network. <payload_length>: [length in bytes] <payload>: [12 bytes maximum in hexadecimal format] <opt_responsewait>: [0: no response waited (default)] <opt_responsewait>: [1: response waited] <opt_txflag>: [0: one Tx frame sent] <opt_txflag>: [1: three Tx frames sent (default)] Ex) AT\$SH=1,A,1 (CR) AT\$SH=1,A (CR) sends 0x41 payload with no response waited. AT\$SH=1,A,1 (CR) sends 0x41 payload with a response waited.
AT\$CW=freq	Continuous wave(CW)	Start or stop a continuous unmodulated carrier for test. Run CW Test mode. <freq>: frequency (in Hz) Ex) AT\$CW=868130000 (CR) AT\$CW=0 (CR) Stop a CW
AT\$PN=freq,bitrate	PRBS9 BPBSK test mode	Run PRBS9 BPBSK Test mode. Send a continuous modulated carrier for test. <freq>: frequency (in Hz) <bitrate>: 100 or 600 Ex) AT\$PN=868130000,100 (CR) AT\$PN=0 (CR) Stop a BPBSK
AT\$TM=rc,mode	Sigfox test mode	Start a Sigfox test mode. <rc> SFX_RC1 = 1 SFX_RC2 = 2 SFX_RC3C = 3C SFX_RC4 = 4 SFX_RC5 = 5 SFX_RC6 = 6 SFX_RC7 = 7 <mode> SFX_TEST_MODE_TX_BPSK = 0 SFX_TEST_MODE_TX_PROTOCOL = 1 SFX_TEST_MODE_RX_PROTOCOL = 2 SFX_TEST_MODE_RX_GFSK = 3 SFX_TEST_MODE_RX_SENSI = 4

		<p>SFX_TEST_MODE_TX_SYNTH = 5 SFX_TEST_MODE_TX_FREQ_DISTRIBUTION = 6 SFX_TEST_MODE_RX_MONARCH_PATTERN_LISTENING_SWEEP = 7 SFX_TEST_MODE_RX_MONARCH_PATTERN_LISTENING_WINDOW = 8 SFX_TEST_MODE_RX_MONARCH_BEACON = 9 SFX_TEST_MODE_RX_MONARCH_SENSI = 10 SFX_TEST_MODE_TX_BIT = 11 SFX_TEST_MODE_PUBLIC_KEY = 12 SFX_TEST_MODE_NVM = 13</p> <p>Ex) AT\$TM=1,0 (CR)</p>
AT\$RC=rc AT\$RC=?	Region configuration	<p>Set or Get the region configuration.</p> <p><rc></p> <p>SFX_RC1 = 1 SFX_RC2 = 2 SFX_RC3C = 3C SFX_RC4 = 4 SFX_RC5 = 5 SFX_RC6 = 6 SFX_RC7 = 7</p> <p>Ex) AT\$RC=1 (CR) AT\$RC=? (CR) Get the region configuration</p>
AT\$RSSICAL=value AT\$RSSICAL=?	RSSI value in dB	<p>Set or Get the RSSI calibration value in dB.</p> <p><value>: calibration value (in dB)</p> <p>Ex) AT\$RSSICAL=0 (CR) AT\$RSSICAL=? (CR)</p>
AT\$RL=freq	Listening for a data packet	<p>Starts listening for a local loop.</p> <p><freq>: frequency (in Hz)</p> <p>Ex) AT\$RL=869525000 (CR)</p>
AT\$SL=freq,datarate,count	Send local loop	<p>Send TX packet up to count number for local test.</p> <p><freq>: frequency (in Hz) <datarate>: data rate (in bps) <count>: send packets counter</p> <p>Ex) AT\$SL=869525000,600,10 (CR)</p>
ATS300	Out-of-band message	<p>Send one keep-alive out-of-band message.</p> <p>Ex) ATS300 (CR)</p>

ATS302=power ATS302=?	Radio output power	Set or Get the radio output power. <power> : power (in dBm) Ex) ATS302=15 (CR) ATS302=? (CR) Get power
ATS400=<8_digit_word0> <8_digit_word1><8_digit_ word2>,timer_enable	Enabled channels for FCC	Configure the enabled channels for FCC. Ex) ATS400=000000004000000000000000,0 (CR)
ATS410=key ATS410=?	Encryption key	Set or Get the configuration of the device encryption key. <key>: [0: Use Private key, 1: Use Public key] Ex) ATS410=1 (CR) ATS410=? (CR) Get the encryption key
ATS411=mode ATS411=?	Payload encryption	Set or Get the device payload encryption mode. <mode>: [0:Payload Encryption OFF, 1:Payload Encryption ON} Ex) ATS411=1 (CR) ATS411=? (CR) Get payload encryption